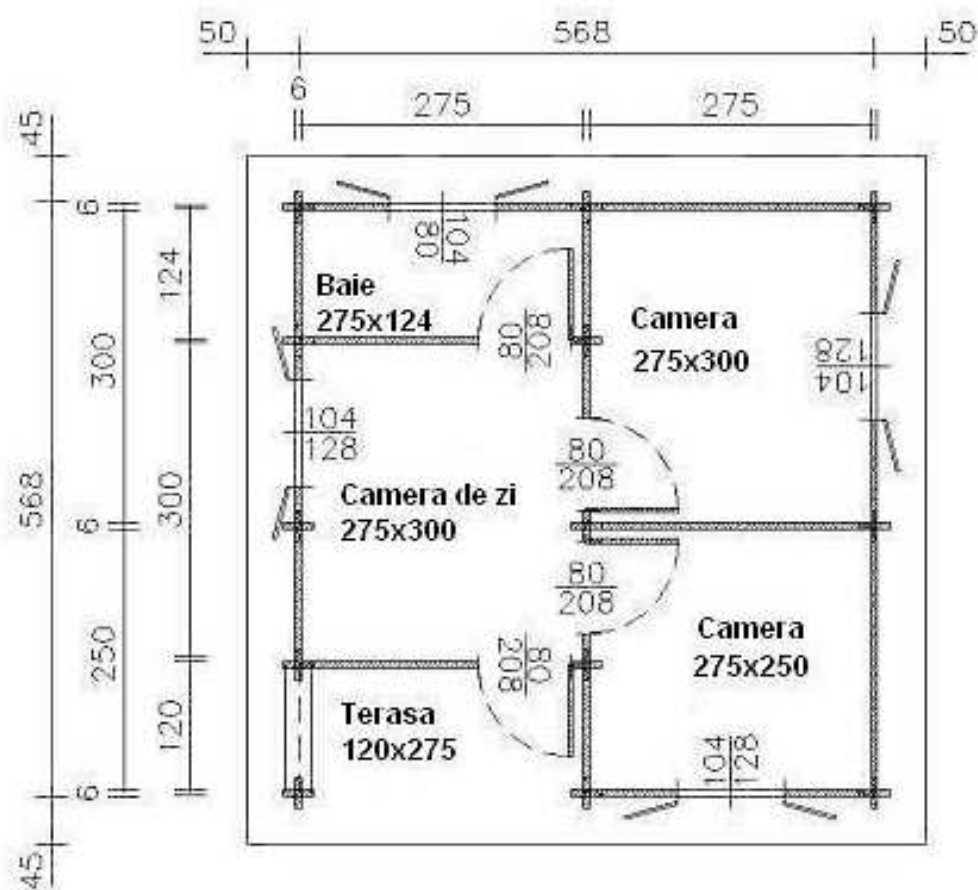


MAISONS EN BOIS MÉDITERRANÉE

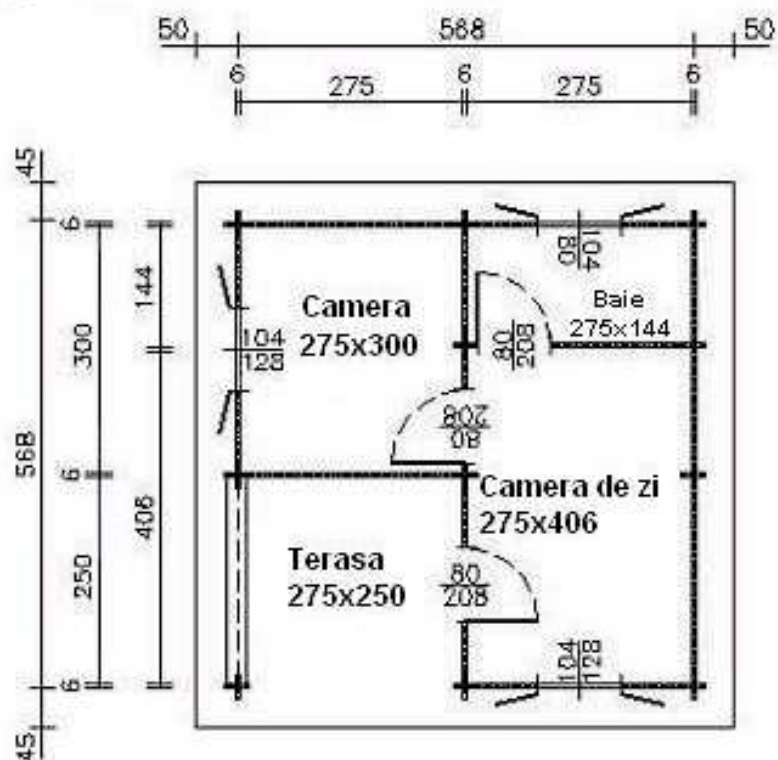
MADRIERS EMBOÎTÉS



Modèle ALINA – 32,26 m² (5,68 x 5,68 m)



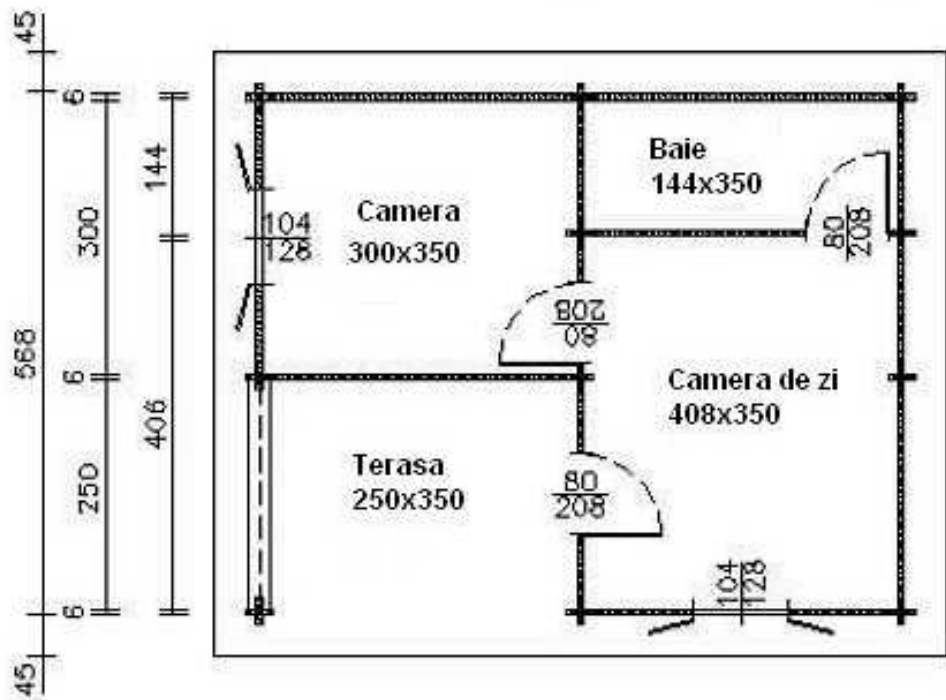
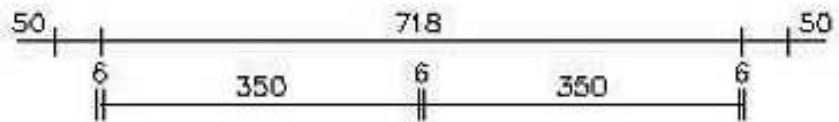
TIG-RAD SYSTEM®



Modèle ANITA – 32,26 m² (5,68 x 5,68 m)



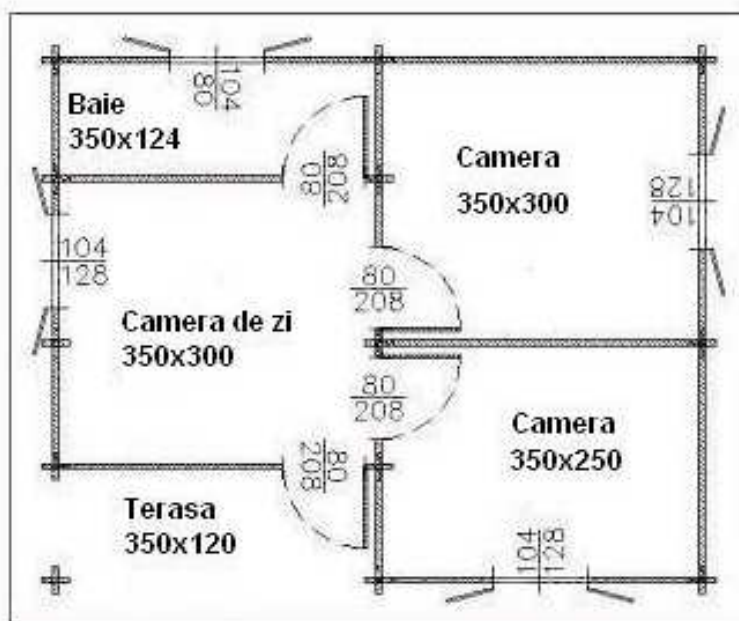
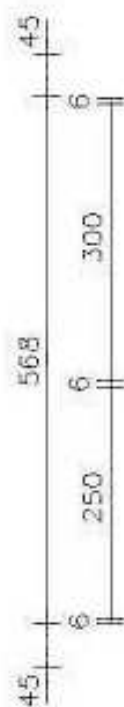
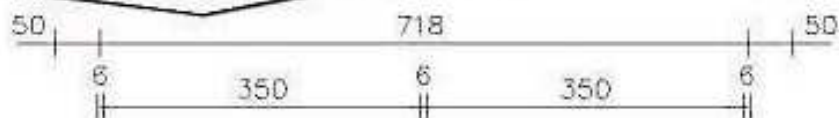
TIG-RAD SYSTEM®



Modèle BARBARA – 40,78 m² (7,18 x 5,68 m)



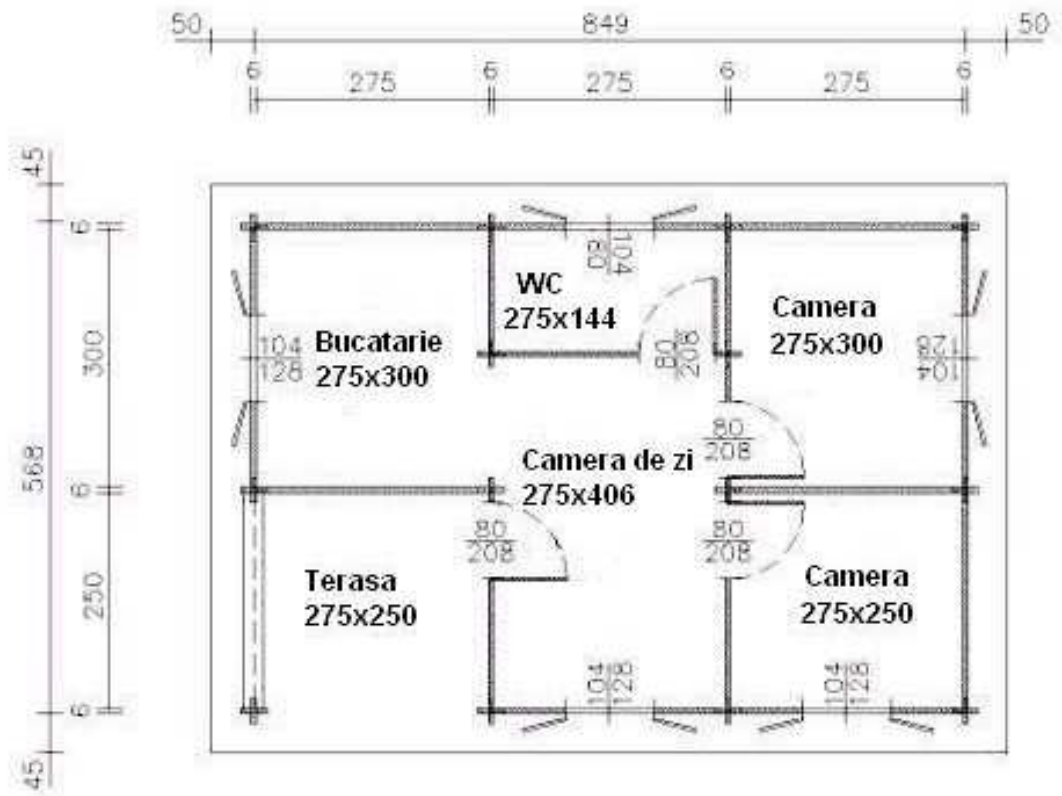
TIG-RAD SYSTEM®



Modèle BONITA – 40,78 m² (7,18 x 5,68 m)



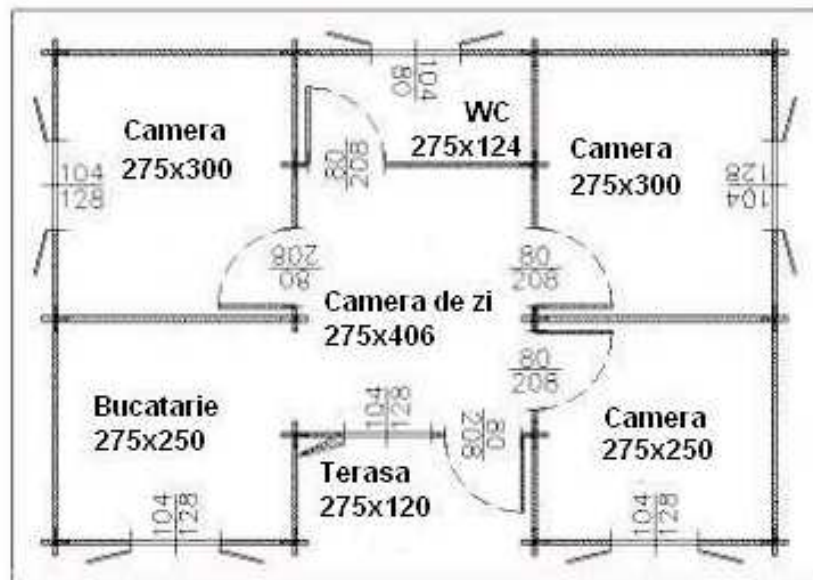
TIG-RAD SYSTEM®



Modèle CLARA - 48,22 m² (8,49 x 5,68 m)



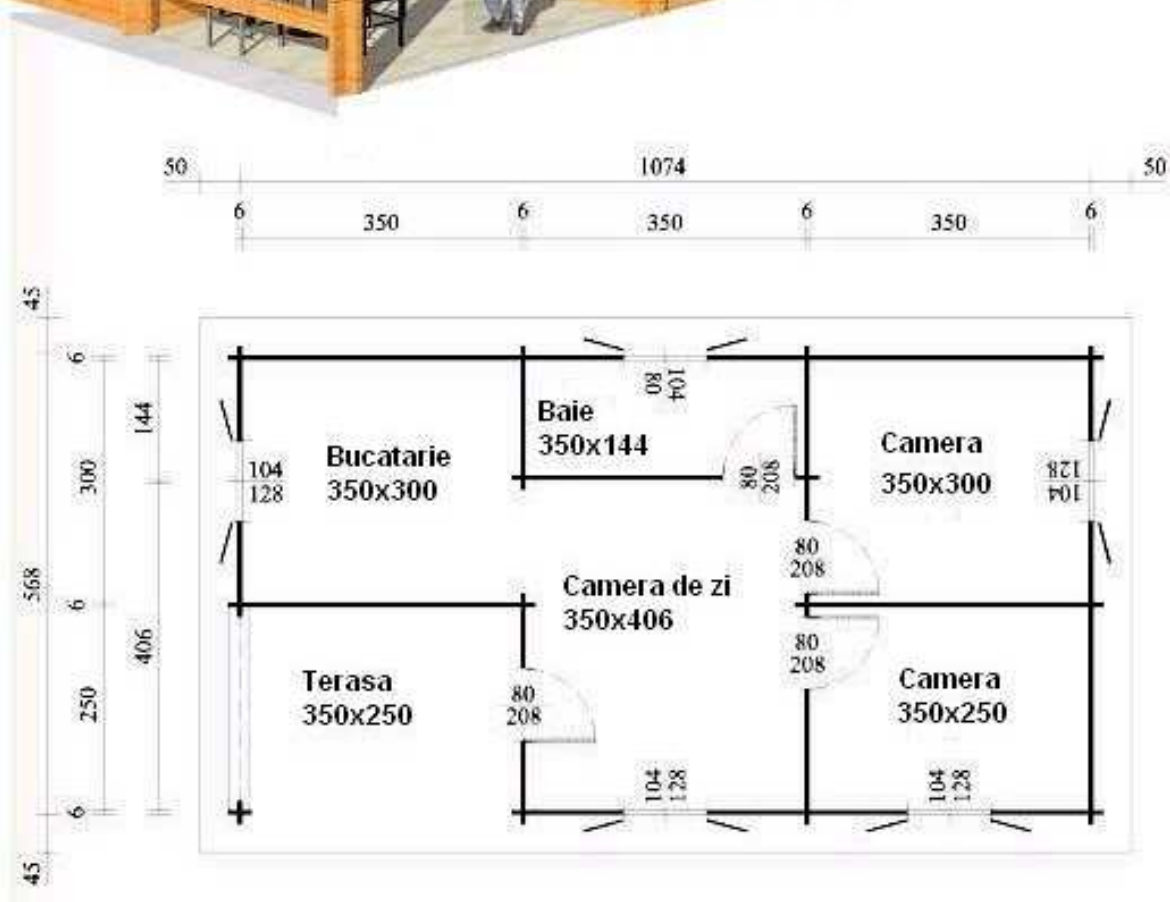
TIG-RAD SYSTEM®



Modèle CLEMENTINA – 48,22 m² (8,49 x 5,68 m)



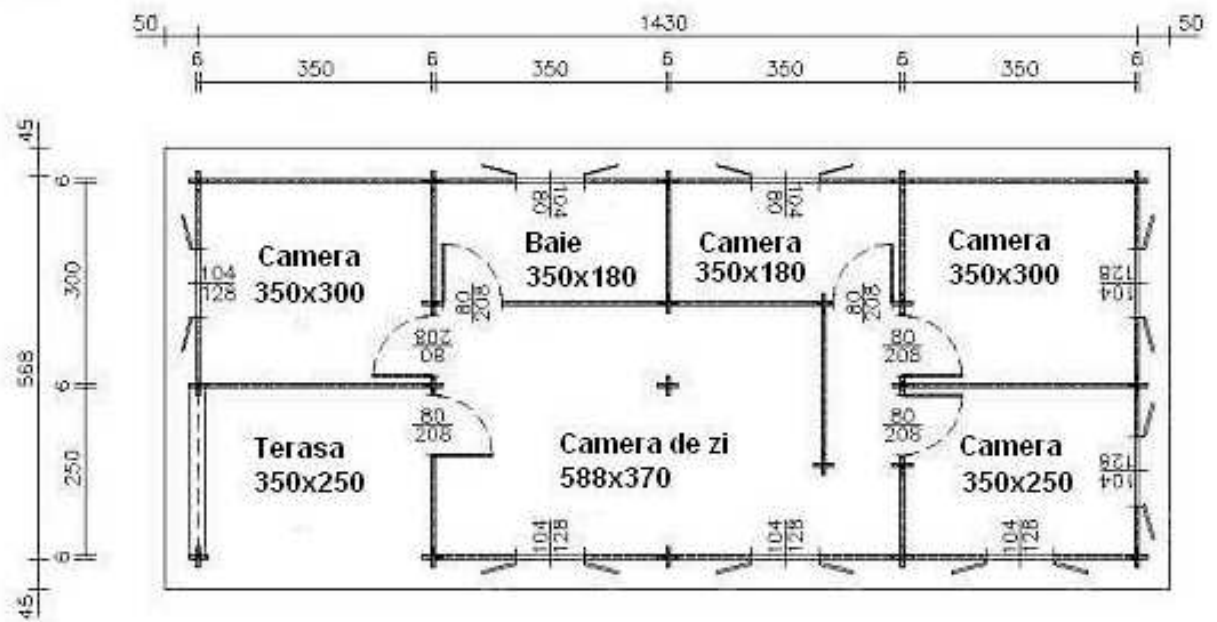
TIG-RAD SYSTEM®



Modèle CRISTINA – 61,00 m² (10,74 x 5,68 m)



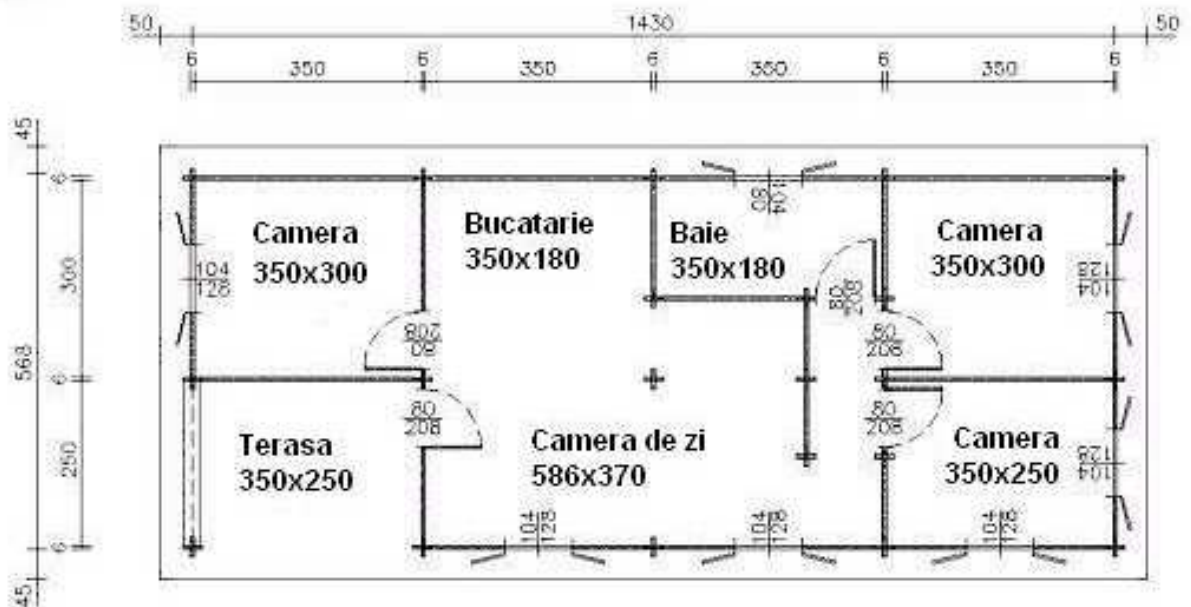
TIG-RAD SYSTEM®



Modèle DIANA – 81,22 m² (14,30 x 5,68 m)



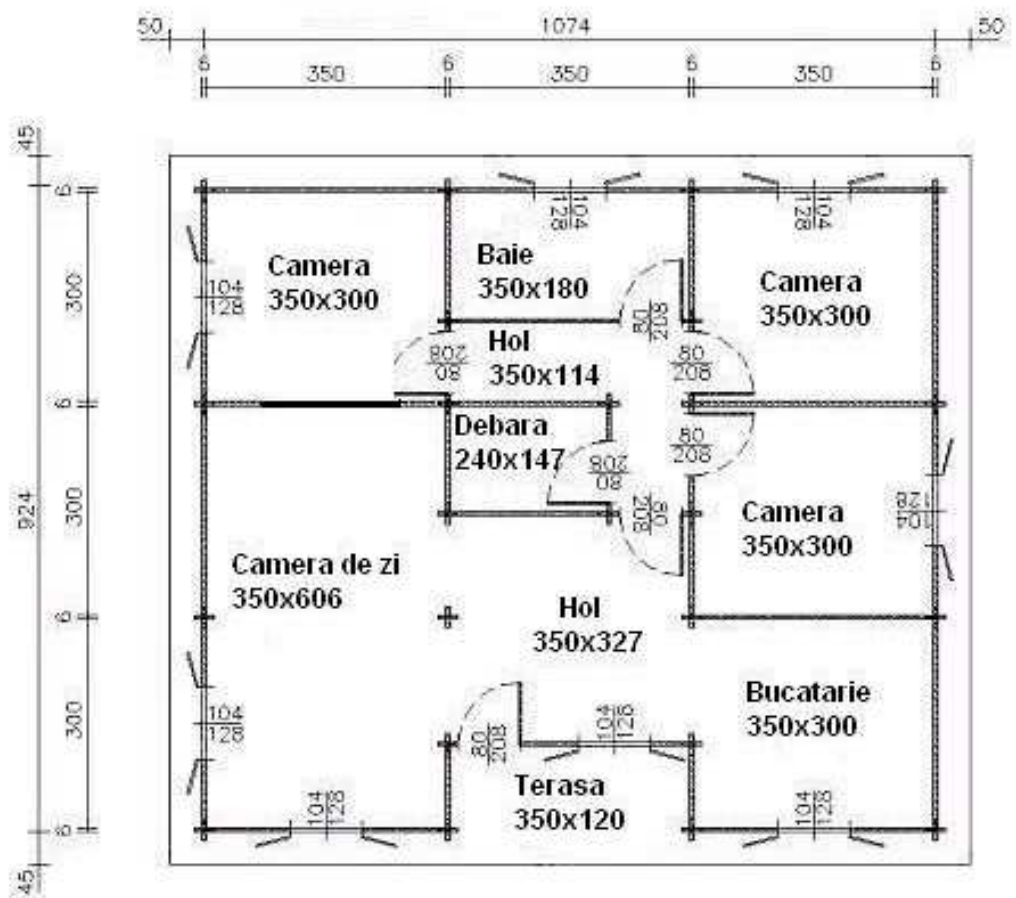
TIG-RAD SYSTEM®



Modèle DORA – 81,22 m² (14,30 x 5,68 m)



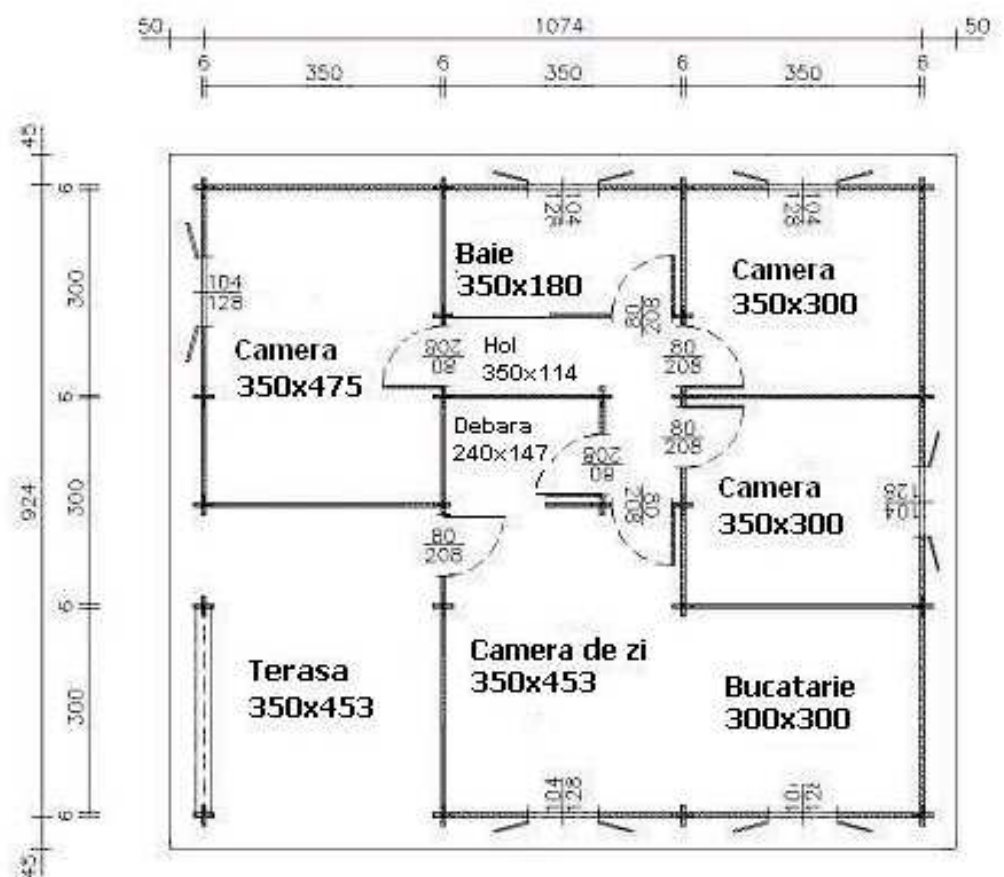
TIG-RAD SYSTEM®



Modèle EMMA – 99,24 m² (10,74 x 9,24 m)



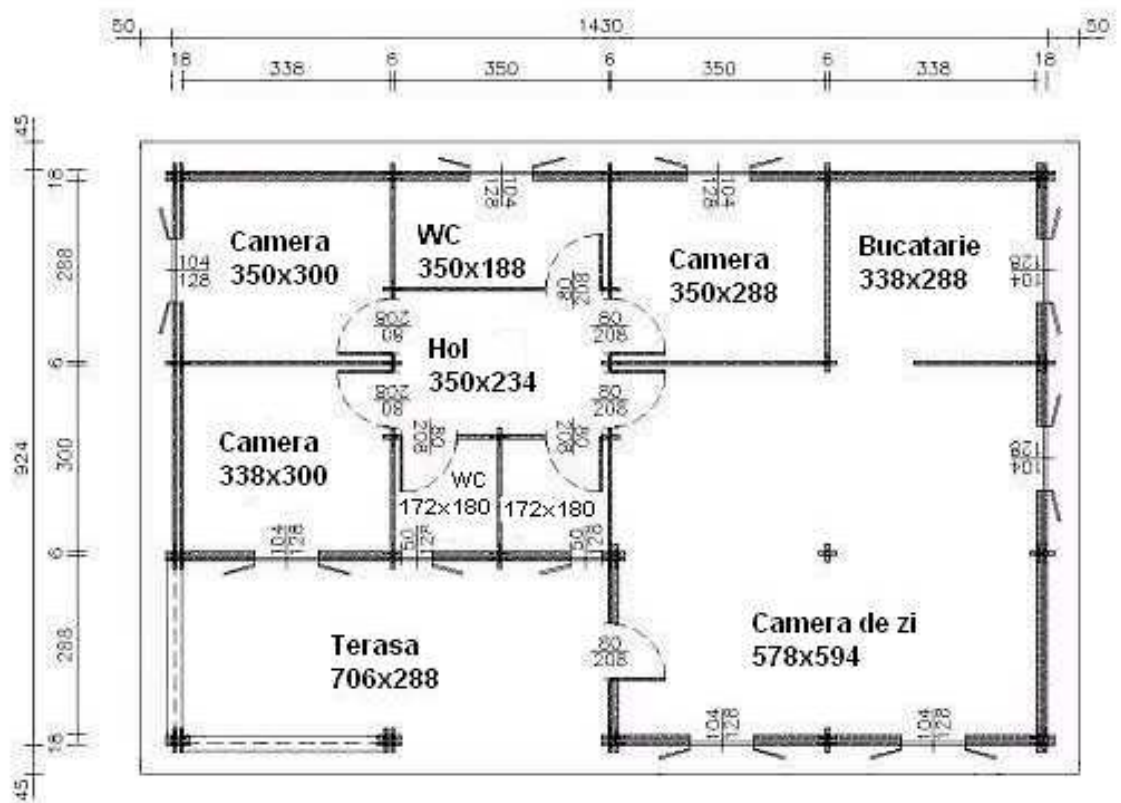
TIG-RAD SYSTEM®



Modèle ERIKA – 99,24 m² (10,74 x 9,24 m)



TIG-RAD SYSTEM®



Modèle FLORA – 132,13 m² (14,30 x 9,24 m)



TIG-RAD SYSTEM®



chalets@malvina.fr